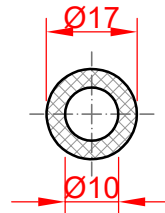
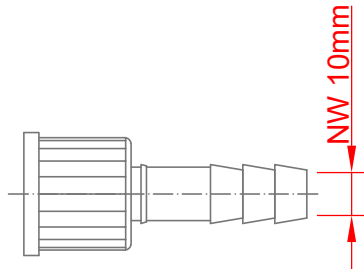


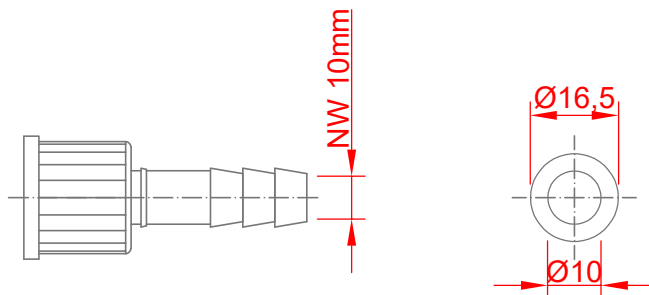
Silikonschläuche
Kühlwasser



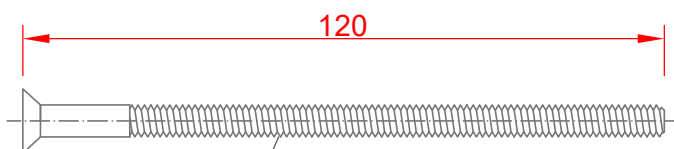
Gewebesilikonschlauch
lebensmittelecht
Bier



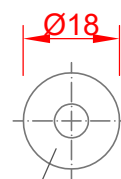
Schott GL18 Tülle PP
für 2x Kühlwasserschlauch



Edelstahl-tülle NW 10 für Bier-Gewebedruckschlauch
mit GL18 PBT Gewindekappe rot und
2mm Silikon-Flachdichtung AD 16,5mm ID 10mm



M6 A2 Imbus
Senkschraube



M6 A2
Beilagscheibe



M6 A2
Mutter

8xFlanschverschraubung A2 M6